

Contents and importance of environmental questions for the management and maintenance of the Golf and Country Club Seddiner See

Horst Schubert - CEO G&CC Seddiner See AG

David Duke - Course Superintendent G&CC Seddiner See AG



Aerial photograph 2003



Environmental management 250 years ago

„A well educated person makes nature his friend.“

Friedrich Schiller

Quality and environmental management from three different perspectives:

... from the perspective of the members or golfers

... from the perspective of the golf club

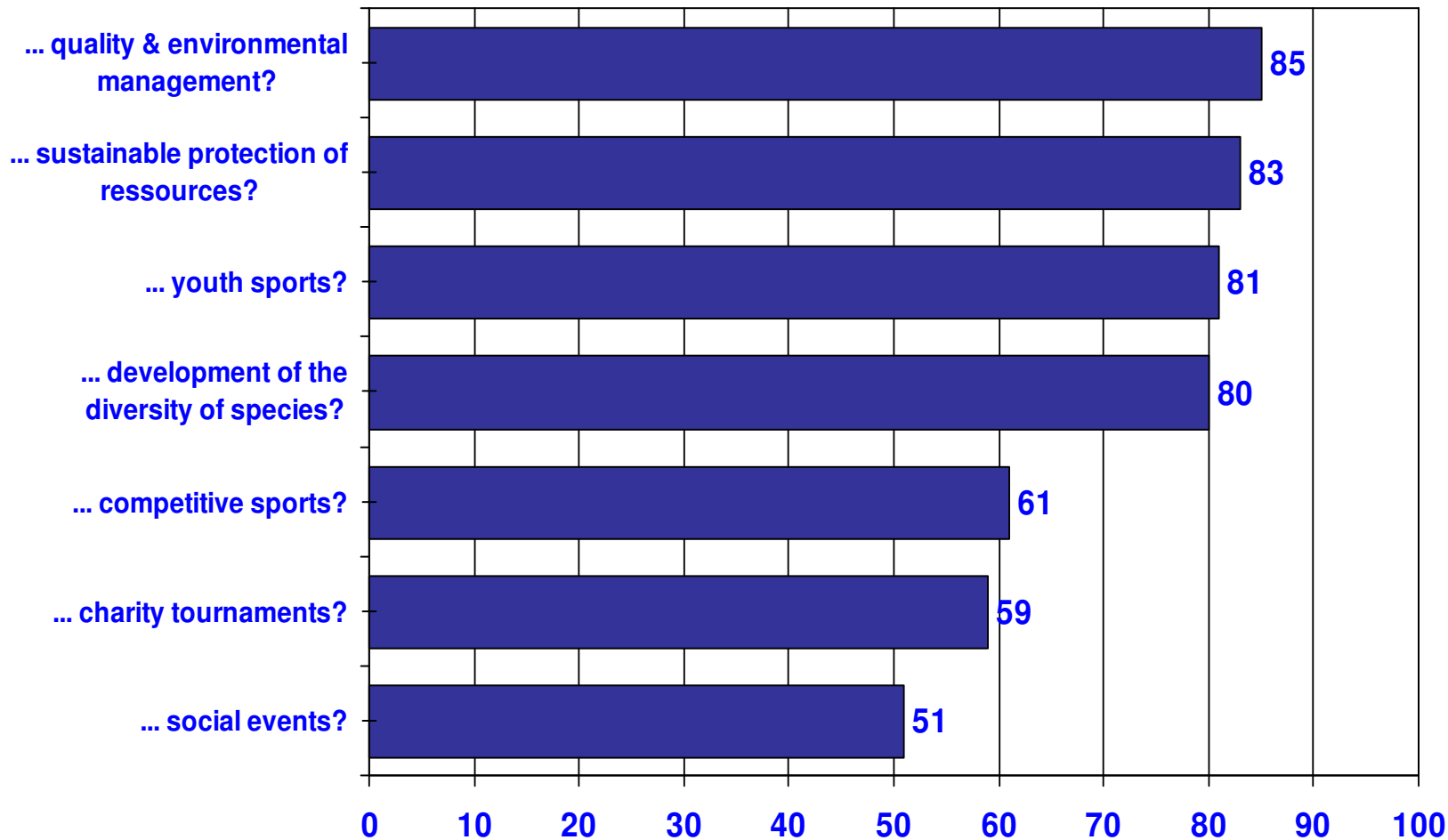
... from the perspective of the German Golf Association

Quality and environmental management from the perspective of the members

Results of the market research survey among the members of the Golf & Country Club Seddiner See (february/march 2010)

Question 14a: How important is the club's involvement in ...

Top Two Boxes (= portion of evaluations „important“ und „very important“)



Quality and environmental management from the perspective of the golf club

Club philosophy of the Golf and Country Club Seddiner See:

„Transparancy, efficiency and sustainability are the objectives as well as the substance of company policy, with particular importance being placed upon quality and environmental management. As a result, among other things, the preservation and care of nature, and as far as possible the protection of natural ressources are the central concern for the running the golf club.“

Quality and environmental management from the perspective of the German Golf Association

- a) incorporated the requirement of environmental protection into it's articles in 2010
- b) development of the quality and environmental management programm „golf and nature“ since 2005

Participation at the quality and environmental programm „golf and nature“

2005	registration and inventory
2006	development plan and implementation
2007	bronze certificate
2008	silver certificate
2009	gold certificate
2011	review of the agreed activities

Gold certificate „golf and nature“



The „golf and nature“ team

- chairman of the supervisory board
- chief executive officer
- Course Superintendent and first assistant
- building developer
- external experts (e. g. Prof. Dr. Olaf Mietz)

Our factors for success

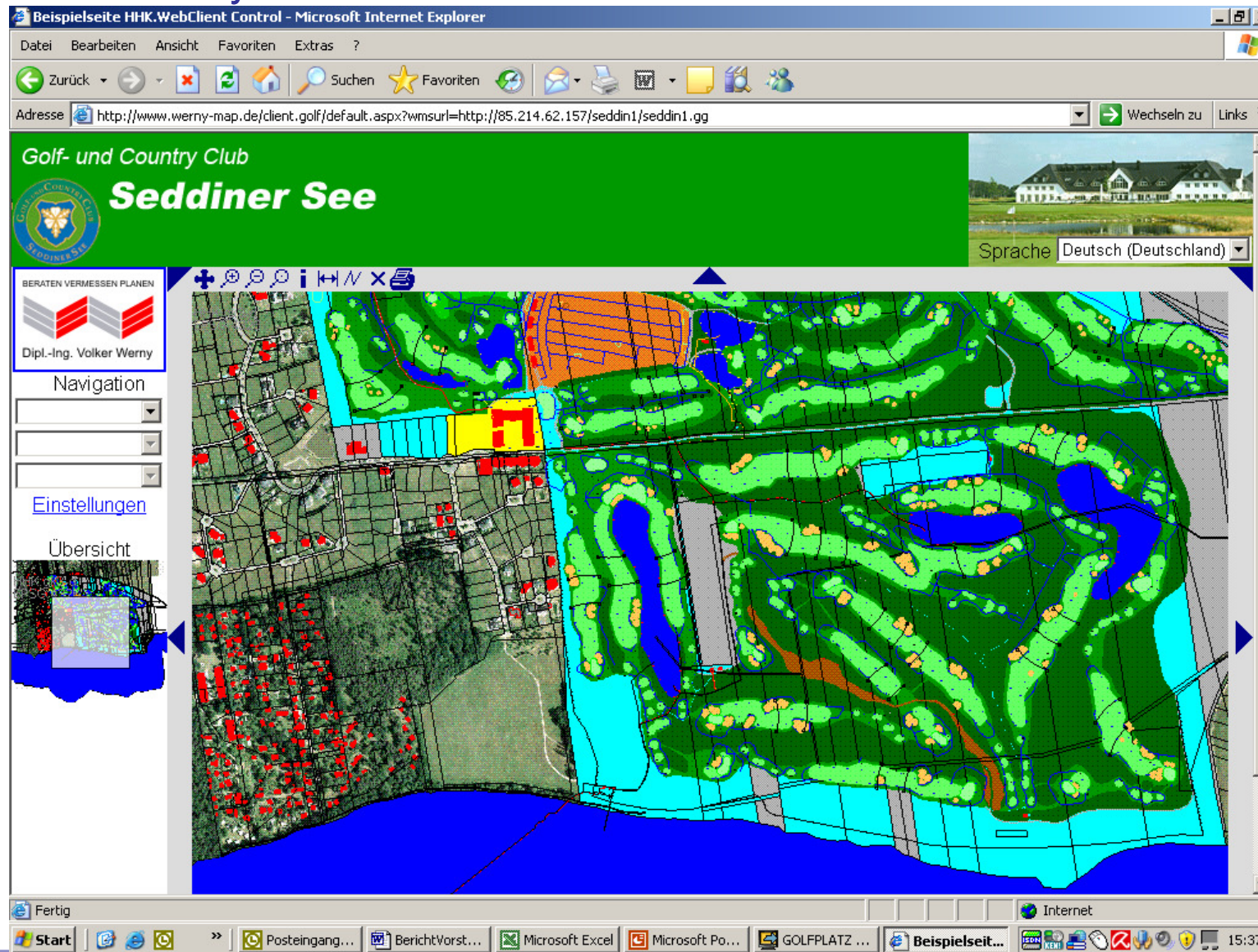
- transparency
- efficiency
- sustainability

→ in both **quantitative** as well as **qualitative** terms,

→ in both **commercial** as well as **ecological** sectors,

Transparency in quantitative terms

GPS land survey



Transparency in qualitative terms

fauna & flora survey 2007/2008

Institut für angewandte Gewässerökologie GmbH
Leitung: Prof. Dr. habil O. Mietz



Floristisches und Faunistisches Fachgutachten
GOLF- UND COUNTRY CLUB SEDDINER SEE
Teil II: Faunistisches Fachgutachten



Institut für angewandte Gewässerökologie GmbH

Seddiner See im November 2008



Survey of the diversity of species



Comparison 1991 / 2008

	1991	2008
number of species (totally)	113	323
Flora „Red List“	63 7	122 10
Fauna „Red List“	50 8	201 62

The key factor „sustainability“

Member's satisfaction with the quality of the golf courses

Results of the members surveys 2003 and 2010

	2003 good / very good %	2010 good / very good %	Improvement 2003 / 2010 %
North course	72,3	80,6	8,3
South course	82,0	89,0	7,0

Golf & Country Club Seddiner See

In the beginning.....

Construction of

- Two 18 hole golf courses
- Driving range and short course
- Exclusive villas and apartments



Culture Shock....



Golf u. Country Club Seddiner See – April 1996

Professionalism From The Start...

- Master Greenkeeper (BIGGA)
- Audubon International Cooperative Sanctuary
 - First golf course in Germany to be awarded certificate.
 - Began process in 1998 and awarded certificate in 2000.
- Certified Golf Course Superintendent (GCSAA)
- Golf & Nature
 - Bronze, Silver and Gold
- The Leading Golf Courses of Germany



Golf & Nature

- Test of all aspects of Golf Course
- Environmentally-friendly personnel & membership
- More than just being Green
- A complete survey of the clubs methods – inside & out

The Leading Golf Courses of Germany

- Independent and Anonymous inspection performed by “mystery” players.
- Performed up 18 times a year.
 - Course
 - Facilities
 - Gastronomy
 - Staff
- Done from a golfer’s perspective.



Vision of Quality

- Environmental
- Financial
- Personnel
- Provide Members and Guests the best product achievable.



Vision of Quality

- **Environmental**

- Our job is to preserve and protect the wildlife in and around the course.
- Provide natural habitats for all species.
- Prove to the locals that a golf course does not harm, but enhances and protects the environment.
- Monitor and record plants and wildlife at Seddiner See
 - Began recording data in 1996.
- Provide outreach programs to schools and organizations.
- Tree Sponsorship program.

Vision of Quality

- **Financial**

- Forward planning
- Use of Trims Course Management software to record and monitor.
- Re-investment

Modern and Up-To-Date Machine Park



Vision of Quality

- **Personnel**

- Develop a trained and motivated staff
- Utilize staff cost effectively and efficiently
 - Reduce full-time staff
 - Increase seasonal staff
- Schedule work hours to reduce conflict to players and those living around course.



Vision of Quality

- Provide Members and Guests with a Top Quality Golf Experience
 - Maintain the highest standards year round.
 - Constant inspection and refurbishment.
 - Continued improvements to course and facilities
 - Membership survey.

Design plays a factor in our maintenance costs

Bunkers	Number	Hectares
North Course	92	,5
South Course	84	1,6

Bunkers	Average Hours/Week	Method
North Course	25,5	Hand Raked
South Course	51	Machine Raked

These factors effect our overall costs

Fairways

- North Course
 - Fescue 12 Hectare
- South Course
 - Southshore Agrostis 16 Hectare

60% of Fairway overall costs are on the South Course

70% of Nitrogen is used on the South Course

Review on a Regular Basis

- Examine cost differences between courses
 - Design
 - Grass Species
 - Size of Fairways

Fertilizer Application

	Fair-ways	Greens	Tees	Semi-Rough	Total	%
North Course	54,5	193	43	10	300,5	38.35
South Course	204,5	201,5	68,5	8,5	483	61,5

	North Course	South Course
Fairways	21%	79%
Greens	49%	51%
Tees	39%	61%
Semi-Rough	54%	46%

Environmentally Friendly Management of our Lakes

- Water Testing
- Electro Fishing the Lakes
- High Quality Fertilizers
- Buffer Zones
- Low Chemical Inputs on course



EIGCA May 2011 Potsdam

Golf- und Country Club Seddiner See

